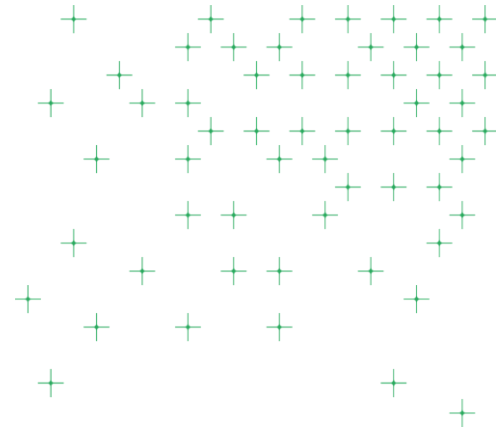


# Connect. Be Inspired. Take Action.



**Tuesday**

**31 January 2023**

**08:30 – 14:00**

**Senate House,**

**University of London, Malet Street,**

**London, WC1E 7HU**

## Getting there

Senate House is located in Bloomsbury and is a short walk from Russell Square, Goodge Street, Tottenham Court Road, Warren Street and Euston stations. Please arrive via the main entrance on Malet Street.

## Connecting to wifi

Connect to open network: UoL Conferences (no password needed)

## Being social

We will be posting from the Mayor of London and City Hall social media accounts during the day. You can be part of the conversation by sharing your support across your own/ organisational social channels. Retweet our messages or share your own. Remember to use [#LondonAnchors](#) to be part of the conversation.

Association of Colleges | Business LDN | Central London Forward | Film London | Greater London Authority | Local London | London Boroughs of Barking & Dagenham, Camden, Islington, Lambeth, Lewisham | London Chamber of Commerce and Industry | London City Airport | London Councils | London Fire Brigade | London Higher | London Jewish Forum | London South East Colleges | Metropolitan Police | Middlesex University | Muslim Council of Britain | New City College | NHS London | South London Partnership | Thames Water | The Church of England | The Trades Union Congress (London, East & South East) | Transport for London | University of London | Waltham Forest College | West London Alliance |

# Welcome

## London Anchors Institutions' Conference 2023

This is the first time we've been able to come together under one roof to share experiences, your achievements, our collective learning and talk face-to-face – that alone is something to celebrate.

### Overview

The onset of the COVID-19 pandemic was the most challenging period in London's recent history, resulting in profound social and economic impacts. In the face of this challenge, organisations across London committed to work together as never before.

In March 2021, our founding organisations signed London's first ever city-wide Anchor Institutions' Charter. With significant presence and influence in the city, our signatories pledged to leverage their procurement, recruitment and estate management capacity to support Londoners most impacted by the pandemic, and to ensure a green recovery.

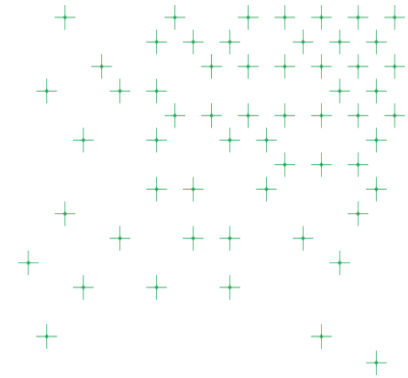
Two years on, we have a growing membership across the public, private, faith-based, education and cultural sectors.

We'd like to thank every member of the network for pledging to work together to help create a fairer, greener, more prosperous London. Members participating in the network and its working groups are listed below.

Association of Colleges | Business LDN | Central London Forward | Film London | Greater London Authority | Local London | London Boroughs of Barking & Dagenham, Camden, Islington, Lambeth, Lewisham | London Chamber of Commerce and Industry | London City Airport | London Councils | London Fire Brigade | London Higher | London Jewish Forum | London South East Colleges | Metropolitan Police | Middlesex University | Muslim Council of Britain | New City College | NHS London | South London Partnership | Thames Water | The Church of England | The Trades Union Congress (London, East & South East) | Transport for London | University of London | Waltham Forest College | West London Alliance |

# Agenda

Inspire and celebrate



08:30 - 09:00	Registration and breakfast
09:00 - 09:10	Introduction to the Day, Chair
09:10 - 09:20	Welcome, Mayor of London
09:20 - 09:40	About the London Anchor Institutions' Network
09:40 - 10:15	Panel discussion - <i>Translating theory into practice</i>
10:15 - 10:50	Building connections (networking pause)
10:55 - 11:25	Panel discussion - <i>Transformation at scale</i>
11:30 - 12:30	Break out workshops: <ol style="list-style-type: none"><li>1. <i>Advocating &amp; embedding culture change</i></li><li>2. <i>Building and measuring social value</i></li><li>3. <i>Communicating impact</i></li><li>4. <i>Nurturing place-based links</i></li></ol>
12:35 - 12:50	Importance of the anchors approach
12:50 - 12:55	Closing remarks
13:00 - 14:00	Lunch

Association of Colleges | Business LDN | Central London Forward | Film London | Greater London Authority | Local London | London Boroughs of Barking & Dagenham, Camden, Islington, Lambeth, Lewisham | London Chamber of Commerce and Industry | London City Airport | London Councils | London Fire Brigade | London Higher | London Jewish Forum | London South East Colleges | Metropolitan Police | Middlesex University | Muslim Council of Britain | New City College | NHS London | South London Partnership | Thames Water | The Church of England | The Trades Union Congress (London, East & South East) | Transport for London | University of London | Waltham Forest College | West London Alliance |

# Background

## Network's focus

Members of the network are focusing on:

- **Procurement:** Supporting inclusive growth by buying a greater share of goods and services from London-based micro, small, medium-sized and/or diverse businesses.
- **Hiring and Skills:** Maximising good work opportunities for Londoners underrepresented in the labour market, and taking steps to be more representative of the communities they serve.
- **Mentoring Young People:** Working with youth support organisations to improve life chances and opportunities for young Londoners through quality mentoring.
- **Green New Deal:** Accelerating London's drive to net zero through estate decarbonisation and ensuring a robust, trained workforce to support this.
- **Place-based working:** Advancing anchor partnerships and ways of working across London's local communities. Their report on building community benefit through local anchor networks is published [here](#) along with a [how to guide](#).

Association of Colleges | Business LDN | Central London Forward | Film London | Greater London Authority | Local London | London Boroughs of Barking & Dagenham, Camden, Islington, Lambeth, Lewisham | London Chamber of Commerce and Industry | London City Airport | London Councils | London Fire Brigade | London Higher | London Jewish Forum | London South East Colleges | Metropolitan Police | Middlesex University | Muslim Council of Britain | New City College | NHS London | South London Partnership | Thames Water | The Church of England | The Trades Union Congress (London, East & South East) | Transport for London | University of London | Waltham Forest College | West London Alliance |

# Background

## Example commitments and actions

### Procurement – anchor institutions have:

- Pledged to spend up to 30% of their annual procurement budgets on small and diverse businesses based in London. Some are on track to exceed their spend targets for this financial year.
- Begun delivering joint market engagement / supplier readiness events for small and diverse businesses.

### Hiring and Skills – anchor institutions have:

- Supported almost 4,000 apprentices in the past year
- Uplifted almost 6,000 Londoners' pay through new London Living Wage commitments
- Pledged around £2m in apprenticeship levy to small and medium businesses
- Supported Londoners from underrepresented backgrounds into good work, including prison leavers, care leavers and neurodiverse young people

### Mentoring Young People – anchor institutions are:

- Supporting the New Deal for Young People mission to ensure 100,000 disadvantaged young Londoners have access to high quality mentoring by 2024.
- Identifying staff to become mentors, who are completing mentoring training to offer the best possible support to young Londoners.

### Green New Deal – anchor institutions have:

- Put plans in place - across public, education and faith-based sector organisations - to achieve net-zero
- Put forward 31 projects for a regional estate decarbonisation pipeline
- Trained almost 1,000 members of staff in environmental sustainability or carbon literacy

Association of Colleges | Business LDN | Central London Forward | Film London | Greater London Authority | Local London | London Boroughs of Barking & Dagenham, Camden, Islington, Lambeth, Lewisham | London Chamber of Commerce and Industry | London City Airport | London Councils | London Fire Brigade | London Higher | London Jewish Forum | London South East Colleges | Metropolitan Police | Middlesex University | Muslim Council of Britain | New City College | NHS London | South London Partnership | Thames Water | The Church of England | The Trades Union Congress (London, East & South East) | Transport for London | University of London | Waltham Forest College | West London Alliance |

# Speakers

We have secured some fantastic experts in their fields to give today's presentations, participate in panel discussions and facilitate breakout workshops. Sincere thanks to everyone for sharing their knowledge, experience and time. Biographies can be found later in this programme.

## CONFERENCE CHAIR AND KEYNOTE SPEAKERS



Anoosh Chakelian,  
Britain Editor, New  
Statesman (Chair)



Sadiq Khan,  
Mayor of London



Cllr Georgia Gould,  
Chair, London  
Councils



Prof Wendy Thompson  
CBE, Vice-Chancellor,  
University of London

Association of Colleges | Business LDN | Central London Forward | Film London | Greater London Authority | Local London | London Boroughs of Barking & Dagenham, Camden, Islington, Lambeth, Lewisham | London Chamber of Commerce and Industry | London City Airport | London Councils | London Fire Brigade | London Higher | London Jewish Forum | London South East Colleges | Metropolitan Police | Middlesex University | Muslim Council of Britain | New City College | NHS London | South London Partnership | Thames Water | The Church of England | The Trades Union Congress (London, East & South East) | Transport for London | University of London | Waltham Forest College | West London Alliance |

# Speakers

## PLENARY PANELLISTS

### *Translating theory into practice*



Jodie Eastwood,  
Chief Executive,  
Knowledge Quarter



Imandeep Kaur,  
Director,  
Civic Square



Neil McInroy, Senior  
Fellow, Democracy  
Collaborative

### *Transformation at scale: a conversation with the NHS*



Lizzie Smith,  
Regional Director,  
Health Education  
England



Dr. Jo Sauvage, Executive  
Medical Director, North  
London Partners in Health  
and Care



Nathan Christie-Plummer,  
Deputy Director for  
Workforce, West London  
NHS Trust

Association of Colleges | Business LDN | Central London Forward | Film London | Greater London Authority | Local London | London Boroughs of Barking & Dagenham, Camden, Islington, Lambeth, Lewisham | London Chamber of Commerce and Industry | London City Airport | London Councils | London Fire Brigade | London Higher | London Jewish Forum | London South East Colleges | Metropolitan Police | Middlesex University | Muslim Council of Britain | New City College | NHS London | South London Partnership | Thames Water | The Church of England | The Trades Union Congress (London, East & South East) | Transport for London | University of London | Waltham Forest College | West London Alliance |

# Speakers

## WORKSHOP FACILITATORS

*Advocating & embedding culture change*  
- room G7



Victoria Stoyanova,  
Founder, Institute of  
Belonging



Erik Rodin,  
Founder, Able

*Building & measuring social value*  
- room G22 & G26



Guy Battle, Chief  
Executive, Social  
Value Portal



Anna McChesney-  
Gordon, Director of  
Consultancy, Social  
Value Portal

*Communicating impact* - room G11



Debra Sobel,  
CEO, Verity London

Association of Colleges | Business LDN | Central London Forward | Film London | Greater London Authority | Local London | London Boroughs of Barking & Dagenham, Camden, Islington, Lambeth, Lewisham | London Chamber of Commerce and Industry | London City Airport | London Councils | London Fire Brigade | London Higher | London Jewish Forum | London South East Colleges | Metropolitan Police | Middlesex University | Muslim Council of Britain | New City College | NHS London | South London Partnership | Thames Water | The Church of England | The Trades Union Congress (London, East & South East) | Transport for London | University of London | Waltham Forest College | West London Alliance |



# Speakers

## BREAKOUT PANELLISTS

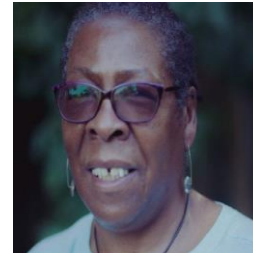
### *Nurturing place-based links*



Camilla Anderson,  
Hassell  
(Moderator)



Simon Pitkeathley  
Chief Executive,  
Camden Town  
Unlimited



Yvonne Field,  
Founder and  
CEO, Ubele  
Initiative



Dr Michael Eades, Head  
of Civic Engagement,  
Goldsmiths, University  
of London



Blossom Young,  
Head of Operations,  
Poplar HARCA

Association of Colleges | Business LDN | Central London Forward | Film London | Greater London Authority | Local London | London Boroughs of Barking & Dagenham, Camden, Islington, Lambeth, Lewisham | London Chamber of Commerce and Industry | London City Airport | London Councils | London Fire Brigade | London Higher | London Jewish Forum | London South East Colleges | Metropolitan Police | Middlesex University | Muslim Council of Britain | New City College | NHS London | South London Partnership | Thames Water | The Church of England | The Trades Union Congress (London, East & South East) | Transport for London | University of London | Waltham Forest College | West London Alliance |

# Biographies

## CONFERENCE CHAIR AND KEYNOTE SPEAKERS

### **Anoosh Chakelian, Britain Editor, New Statesman**

Anoosh Chakelian is Britain Editor of the New Statesman, where she covers policy, politics and social affairs across the country, and interviews politicians and other high-profile figures. She hosts the award-winning New Statesman Podcast and co-presents the Westminster Reimagined podcast series with Armando Iannucci. She appears regularly on national media as a commentator on current affairs. Before the New Statesman, she was deputy editor of Total Politics magazine.

### **Prof Wendy Thomson CBE, Vice-Chancellor, University of London**

Professor Wendy Thomson CBE took up the role of Vice-Chancellor of the University of London in 2019, following a distinguished career in government and higher education. She is a member of the Board of Universities UK, London Higher, Diabetes UK and The Association of Commonwealth Universities (ACU). She also is Chair of the Social Market Foundation.

### **Georgia Gould, Chair of London Councils**

Georgia Gould was elected a Councillor for Kentish Town ward for Camden Council in 2010 at the age of 24. After holding a range of Cabinet portfolios, she became Leader in 2017 and as Leader has made citizen voice, participation and co-production a priority for the organisation. Under her leadership the Council held the country's first Climate Emergency Citizens Assembly in 2019 to inform the response to our climate and ecological emergency. Georgia is Chair of London Councils and Co-Chair of the London Recovery Taskforce as well as a member of the London Economic Action Partnership (LEAP) Board.  
@Georgia\_Gould

# Biographies

## PLENARY PANELLISTS – TRANSLATING THEORY TO PRACTICE

### **Jodie Eastwood , Chief Executive, Knowledge Quarter**

Jodie is CEO of London's Knowledge Quarter, a consortium of knowledge creators within a one mile radius of Kings Cross. KQ Partners include over 100 academic, cultural, research, scientific and media organisations large and small. The aim of the KQ is to encourage all kinds of knowledge seekers to make the most of the partners' combined resources. Jodie specialises in leading complex multi stakeholder partnerships, brokering relationships and creating spaces for ideas sharing and innovation.

### **Dr Imandeep (Immy) Kaur, Director, Civic Square**

Immy is a social activist and businesswoman from Sollihull. In 2020, Kaur became co-founder and director of Civic Square, a civic infrastructure project committed to investing in local communities and neighbourhoods. She is a director of Project 00, a collaborative studio of architects, strategic designers, social scientists, economists and urban designers, and is curator for TEDxBrum.

### **Neil McInroy, Senior Fellow, Democracy Collaborative**

Neil is an experienced urban economic policy thinker, practitioner and organisational leader. He is Global Lead for Community Wealth Building at The Democracy Collaborative, as well as Community Wealth Building Adviser within the Economic Development Directorate of the Scottish Government. For 20 years until 2021, Neil was the Chief Executive of the Centre for Local Economic Strategies (CLES) - the UK's leading organisation for progressive local economic policy.

Association of Colleges | Business LDN | Central London Forward | Film London | Greater London Authority | Local London | London Boroughs of Barking & Dagenham, Camden, Islington, Lambeth, Lewisham | London Chamber of Commerce and Industry | London City Airport | London Councils | London Fire Brigade | London Higher | London Jewish Forum | London South East Colleges | Metropolitan Police | Middlesex University | Muslim Council of Britain | New City College | NHS London | South London Partnership | Thames Water | The Church of England | The Trades Union Congress (London, East & South East) | Transport for London | University of London | Waltham Forest College | West London Alliance |

# Biographies

## PLENARY PANELLISTS – TRANSFORMATION AT SCALE

### **Lizzie Smith, Regional Director, Health Education England (HEE)**

With 20 years' experience of NHS Management, Lizzie was appointed as HEE Regional Director for London in April 2019. Lizzie has worked for HEE since its establishment in 2012, previously as Local Director across North West London. As the Regional Director she is responsible for leading all aspects of HEE's work across London, supporting workforce supply and transformation across all health and care settings. Prior to the establishment of HEE, Lizzie was Head of Education Planning and Market Development in the NHS London People and Organisational Development directorate. More recently, in partnership with NHS England and NHS Improvement, Lizzie has co-led the workforce cell in supporting the regional response to the pandemic.

### **Dr Jo Sauvage, Executive Medical Director, North London Partners in Health & Care**

Jo is a GP and Chief Medical Officer of the North Central London Integrated Care Board and Clinical Director of the NHS London Sustainability Network. Representing NHS England London, she has worked in partnership with Health Education England and the GLA to develop the Primary Care Anchor Networks. She is committed to working in partnership, both within her local system and across the region, to ensure we tackle some of our most important health priorities, and more broadly, advocating for change in tackling those factors that contribute to inequalities in health and wellbeing.

### **Nathan Christie-Plummer, Deputy Director of Workforce, West London NHS Trust**

Working with people is Nathan's passion which is why he has worked in HR for over 20 years across the private, public and not for profit sectors. Nathan has been at West London Trust for 5 years now with recruitment being one of his key (and most challenging) areas of responsibility. When the opportunity arose to lead the refugee recruitment project, Nathan was keen to embrace it to ensure West London NHS Trust is as diverse, inclusive and reflective of the community it serves.

Association of Colleges | Business LDN | Central London Forward | Film London | Greater London Authority | Local London | London Boroughs of Barking & Dagenham, Camden, Islington, Lambeth, Lewisham | London Chamber of Commerce and Industry | London City Airport | London Councils | London Fire Brigade | London Higher | London Jewish Forum | London South East Colleges | Metropolitan Police | Middlesex University | Muslim Council of Britain | New City College | NHS London | South London Partnership | Thames Water | The Church of England | The Trades Union Congress (London, East & South East) | Transport for London | University of London | Waltham Forest College | West London Alliance |

# Biographies

## WORKSHOP FACILITATORS

### **Victoria Stoyanova, Founder, Institute of Belonging**

Victoria is the founder of The Institute of Belonging, a studio exploring the systemic and generative power of networks, communities and ecosystems. She is particularly interested in the changing nature of belonging at work and has previously hosted an award-winning podcast on the topic, The Work We Do. Combining systems thinking and community strategy, Victoria has launched products, spaces and programmes for clients such as Meta, IKEA, LinkedIn, EDF, the Victoria and Albert Museum and more. Victoria is an On Being and Zinc fellow and a visiting lecturer at UAL and Parsons.

### **Erik Rodin, Founder, Able**

Erik is a culture change expert and the founder of Able, a London-based consultancy that supports organisations of all sizes and sectors, including Red Cross, Patagonia, and Spotify, in transforming their way of organising, leading, and working. With 15 years of experience working alongside NGOs, startups, and large companies, he is a seasoned professional who has led projects in North and South America, the Nordics, Europe, and Asia. He approaches all of his work with a deep-seated belief that clients know their own organisations best, and his role is to provide the space for them to collaborate, grow, and learn together.

### **Guy Battle, Chief Executive, Social Value Portal**

Guy is passionate about the contribution that business can make to improve our society. This has been one of the driving motivations behind Social Value Portal, which he set up in 2015 to provide an online solution for measuring, procuring, and managing social value. Guy is also the creator of the National Social Value Measurement Framework (The National TOMs) that have become the most widely used methodology for measuring and reporting social value in the public sector.

Association of Colleges | Business LDN | Central London Forward | Film London | Greater London Authority | Local London | London Boroughs of Barking & Dagenham, Camden, Islington, Lambeth, Lewisham | London Chamber of Commerce and Industry | London City Airport | London Councils | London Fire Brigade | London Higher | London Jewish Forum | London South East Colleges | Metropolitan Police | Middlesex University | Muslim Council of Britain | New City College | NHS London | South London Partnership | Thames Water | The Church of England | The Trades Union Congress (London, East & South East) | Transport for London | University of London | Waltham Forest College | West London Alliance |

# Biographies

## WORKSHOP FACILITATORS

### **Anna McChesney-Gordon, Director, Social Value Portal**

Anna is the Director of Consultancy at the Social Value Portal working with a range of clients in several industries across the public and private sector. The consultancy team of 13 people delivers services including developing strategies or policies, facilitating social value workshops, preparing social value statements for planning applications, conducting local needs analyses and assessing the social value of real estate investments. Anna is also a member of Social Value Portal's Executive Leadership Team and co-chair of the Senior Collaboration Team.

### **Debra Sobel, CEO, Verity London**

Debra is co-Founder and CEO of Verity London – the B Corp certified strategy and communications agency for responsible business. Debra is a leading sustainability communications specialist and thought leader and together with her team, helps organisations define and shape their responsible business strategy and communications, and produce creative content and campaigns. Before co-founding the agency 16 years ago with her business partner, Karen Benveniste, Debra was a prime-time TV BBC Producer / Director working on programmes including Crimewatch and Watchdog.

### **Camilla Siggaard Andersen, Urban Design Research Lead, Hassell**

Camilla is the Urban Design Research Lead at global design and architecture studio Hassell. She is an ARB MAA qualified architect from the Royal Danish Academy of Arts. She chairs New London Architecture's Built Environment Technology Panel and is the Content Curator for Property X-Change, a knowledge sharing initiative launched by the Mayor of London and founding partners.

Association of Colleges | Business LDN | Central London Forward | Film London | Greater London Authority | Local London | London Boroughs of Barking & Dagenham, Camden, Islington, Lambeth, Lewisham | London Chamber of Commerce and Industry | London City Airport | London Councils | London Fire Brigade | London Higher | London Jewish Forum | London South East Colleges | Metropolitan Police | Middlesex University | Muslim Council of Britain | New City College | NHS London | South London Partnership | Thames Water | The Church of England | The Trades Union Congress (London, East & South East) | Transport for London | University of London | Waltham Forest College | West London Alliance |

# Biographies

## BREAKOUT PANELLISTS

### **Simon Pitkeathley, Chief Executive, Camden Town Unlimited**

Simon is CEO of the business improvement districts Camden Town Unlimited and Euston Town, as well as being CEO of Camden Collective & the Camden Highline. He is also Co-Chair of the Cross River Partnership and Camden Giving. Simon sits on the London Enterprise Action Partnership and is its Champion for Small Business. During the pandemic Simon was seconded to the Mayor's Covid Business Forum and London Transition Board, where he Chaired the Business Reopening Strategy Group. He now sits on the London Recovery Board.

### **Yvonne Field, Founder and CEO, Ubele Initiative**

Yvonne is a serial social entrepreneur and change agent. Yvonne has worked across 20 European countries, the English-speaking Caribbean region, Asia and South Africa. In 2014, she established the Ubele Initiative, a national social enterprise which supports Black and racial minority communities to develop sustainable community spaces through intergenerational leadership, community enterprise and social action. She is a member of the Mayor of London's Advisory group on Equality, Diversity and Inclusion

### **Blossom Young, Head of Operations, Poplar HARCA**

Blossom leads social, economic, environmental and cultural regeneration strategies and projects in East London. With a keen interest in re-imagining physical assets to generate value of all kinds, Blossom led the development of Poplar Works, a £6m multi-faceted fashion hub, and Spotlight, a £7M creative youth space. She designed the award-winning Open Poplar programme and is currently developing an inclusive fashion and creative focused economic strategy in the Lower Lea.

Association of Colleges | Business LDN | Central London Forward | Film London | Greater London Authority | Local London | London Boroughs of Barking & Dagenham, Camden, Islington, Lambeth, Lewisham | London Chamber of Commerce and Industry | London City Airport | London Councils | London Fire Brigade | London Higher | London Jewish Forum | London South East Colleges | Metropolitan Police | Middlesex University | Muslim Council of Britain | New City College | NHS London | South London Partnership | Thames Water | The Church of England | The Trades Union Congress (London, East & South East) | Transport for London | University of London | Waltham Forest College | West London Alliance |

# Biographies

## BREAKOUT PANELLISTS

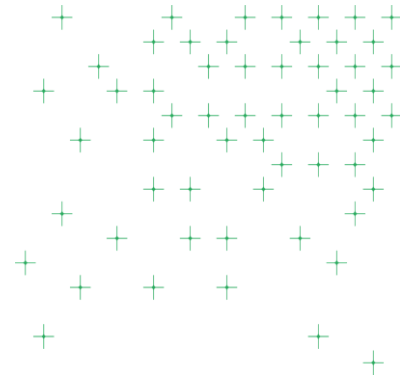
### **Dr Michael Eades, Head of Civic Engagement, Goldsmith's**

Dr Michael Eades' work focusses on activating all parts of the university as a force for public good in the London Borough of Lewisham, including delivering on commitments made in the Goldsmiths Civic University Agreement. Over the years, he has led many projects focused on cities, community arts, co-production and engaging non-specialists in research. This includes acting as Principal Investigator on the AHRC-funded research project 'Bloomsbury Festival in a Box: engaging socially isolated people with dementia' and running the national Being Human festival of the humanities from 2014-2021.

Association of Colleges | Business LDN | Central London Forward | Film London | Greater London Authority | Local London | London Boroughs of Barking & Dagenham, Camden, Islington, Lambeth, Lewisham | London Chamber of Commerce and Industry | London City Airport | London Councils | London Fire Brigade | London Higher | London Jewish Forum | London South East Colleges | Metropolitan Police | Middlesex University | Muslim Council of Britain | New City College | NHS London | South London Partnership | Thames Water | The Church of England | The Trades Union Congress (London, East & South East) | Transport for London | University of London | Waltham Forest College | West London Alliance |

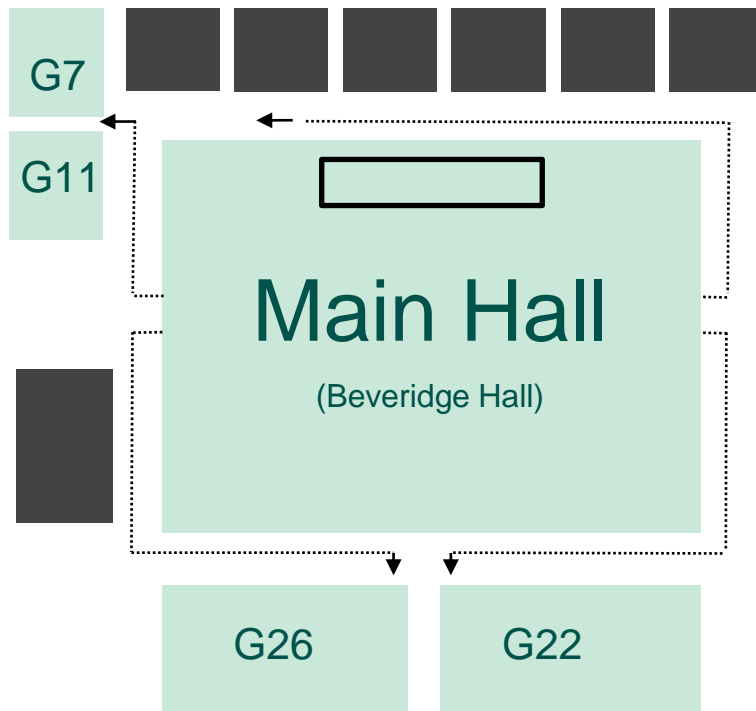


# Workshop Locations



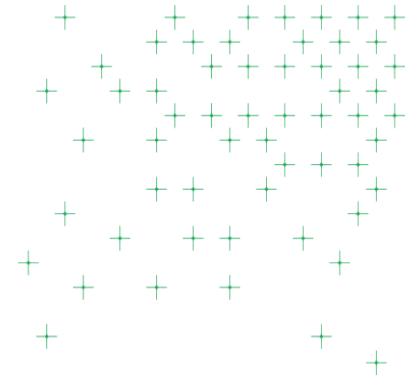
- Advocating and embedding culture change - G7
- Building and measuring social value - G22 & G26
- Communicating for impact - G11
- Nurturing place-based links - Main Hall

## Senate House Floor Plan



Association of Colleges | Business LDN | Central London Forward | Film London | Greater London Authority | Local London | London Boroughs of Barking & Dagenham, Camden, Islington, Lambeth, Lewisham | London Chamber of Commerce and Industry | London City Airport | London Councils | London Fire Brigade | London Higher | London Jewish Forum | London South East Colleges | Metropolitan Police | Middlesex University | Muslim Council of Britain | New City College | NHS London | South London Partnership | Thames Water | The Church of England | The Trades Union Congress (London, East & South East) | Transport for London | University of London | Waltham Forest College | West London Alliance |

# Our partners



## Acknowledgments

**Bloomberg Associates** partner with the Greater London Authority (GLA) and provide critical pro-bono support to the Network. Under their expert guidance, the network continues to grow and deliver on its pledges. Sincere thanks are extended to our Bloomberg Associates colleagues in London and New York.

The **University of London (UoL)** is committed to corporate and social responsibility. University of London Venues have been awarded a Gold sustainability award from Greengage Solutions and 'Highly Commended' Status by the Camden Climate Change Alliance. More information on the UoL's sustainable approach to event delivery can be found [here](#). We are very grateful to University of London Venues for hosting our conference and waiving venue fees.

## Sustainability

This event has been produced in line with the Network's commitments to local and sustainable procurement, opting for local suppliers where possible to provide event materials and videography, and seasonal and locally-sourced ingredients for catering.

Association of Colleges | Business LDN | Central London Forward | Film London | Greater London Authority | Local London | London Boroughs of Barking & Dagenham, Camden, Islington, Lambeth, Lewisham | London Chamber of Commerce and Industry | London City Airport | London Councils | London Fire Brigade | London Higher | London Jewish Forum | London South East Colleges | Metropolitan Police | Middlesex University | Muslim Council of Britain | New City College | NHS London | South London Partnership | Thames Water | The Church of England | The Trades Union Congress (London, East & South East) | Transport for London | University of London | Waltham Forest College | West London Alliance |